



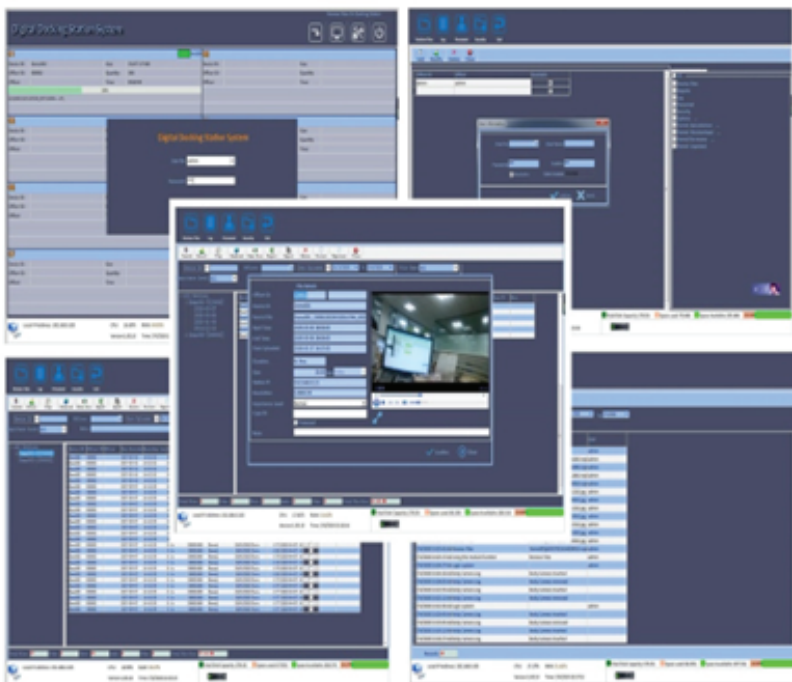
SANCHAR
WIRELESS COMMUNICATIONS LTD.

DEMS

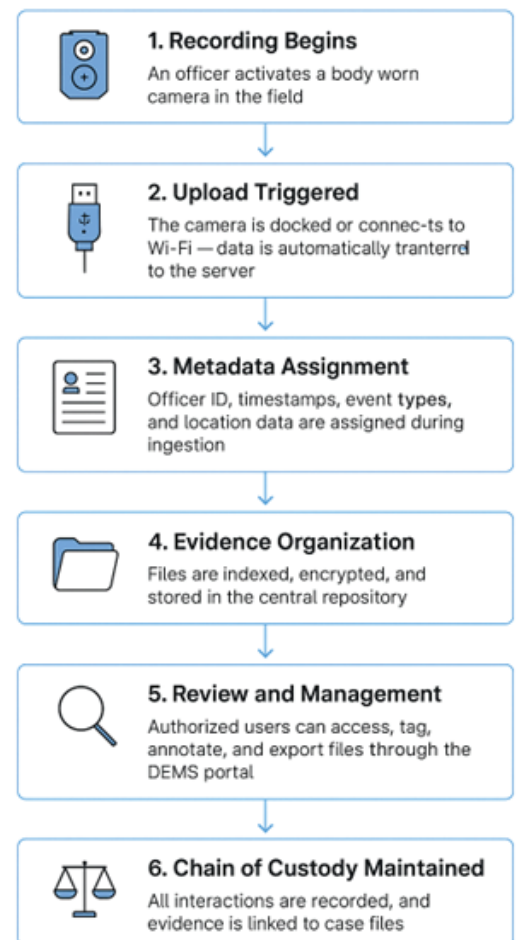
Data Evidence Management System

Sanchar offers a user-friendly Data Evidence Management System (DEMS) designed to complement its range of Body Worn Cameras. Tailored for police forces, private security firms, emergency responders, and public safety organizations, the system ensures the secure handling, easy retrieval, and complaint management of digital evidence.

The System is designed to maximize operational efficiency through features like automated data extraction and seamless body worn camera-to-PC transfer, ensuring that evidence is captured and stored without manual intervention. As files are uploaded, the system also enables automatic data clearing on the device, preparing it for immediate reuse in the field. With a comprehensive search interface, users can quickly locate footage using filters—all contributing to enhanced user convenience and rapid access to mission-critical data.



Evidence Lifecycle Workflow



*Step 3 is optional based on device capability



MAKE IN INDIA



Key Features

- **Automatic Index Uploading:** Automatically uploads the index file generated by each body worn camera to the server's database, streamlining evidence identification and retrieval.
- **Multiple Storage Modes:** Supports distributed, centralized, or hybrid storage configurations, giving flexibility based on an organization's infrastructure and scalability needs.
- **Automatic Data Clearing:** Cleans the device's internal storage after successful upload to the server, ensuring storage availability and minimizing the risk of unauthorized offline access.
- **Super-Big File Uploading:** Supports transfer, download, and playback of large files, ensuring even high-resolution, long-duration videos are handled without interruption.
- **Information Reading:** Automatically extracts and records vital information such as timestamp, device ID, user ID, remaining memory, and battery status from the body camera.
- **Department Management:** Allows administrators to add, edit, or delete department-level records, ensuring proper organizational structure within the system. Restricted for general users.
- **Police Management:** Enables administrators to manage officer records (add, update, delete) while restricting modification privileges for regular users.
- **Device Management:** Grants administrators the ability to register, edit, or remove device entries, helping track issued equipment accurately.
- **System Operation Log:** Generates automatic logs for all actions performed within the system, providing an auditable trail for security and compliance.
- **Data Tagging:** Supports annotation of important evidence files with tags or notes to facilitate faster searching and contextual referencing.
- **Data Locking:** Allows critical or sensitive files to be locked from deletion or overwriting, ensuring preservation of vital evidence.
- **Storage Display:** Shows real-time peripheral storage of docking stations path on the management dashboard, helping plan uploads and hardware use.
- **File Safety:** Only administrators with valid credentials can delete files; standard users have no deletion permissions, safeguarding data from unauthorized actions.
- **Data Export:** Restricted export permissions ensure that only authorized administrators can transfer files out of the DEMS, maintaining chain-of-custody integrity.
- **Breakpoint Resume:** Supports automatic resumption of interrupted uploads, protecting data from corruption or loss during unexpected power failures.
- **Statistical Reports:** Enables authorized users to generate incident and usage reports for specified date ranges, supporting performance tracking and compliance.